

TENANCY AVAILABLE

Boyton Mission

Woodbridge, Suffolk

Boyton Mission occupies a small level plot of ground in the hamlet of Boyton, approximately eight miles from nearby Woodbridge.

📍 Address:

Boyton Mission, Woodbridge, Suffolk IP12 3LP

📏 Square footage:

Worship Hall - 333 sqft • Kitchen - 43 sqft • WC - 32 sqft
• Total floor space - approx 408 sqft

💰 Rent & costs:

5-year lease
£840 per annum /
£16 per week

🔧 Services

Electric
Water

📄 Terms

The property is available to rent on a five year tenancy at just 50% of market value. The tenant will be responsible for all repairs insurance and utilities. Tenant churches must align with Church Growth Trust's doctrines and beliefs - see churchgrowth.org.uk/our-beliefs



KEY DETAILS

 **Seating capacity:**

25

 **Parking spaces:**

4

 **Plot size:**

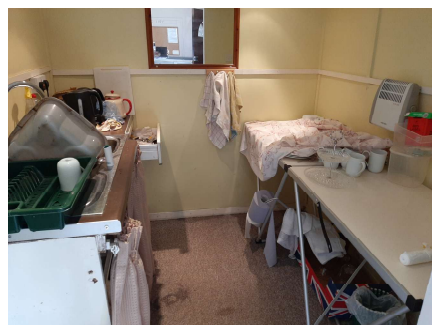
0.1 Acre

 **Facilities:**

Electric heating

Accessible WC

Car parking on site



Located in the heart of the hamlet of Boyton eight miles from the market town of Woodbridge, Boyton Mission is ideally placed for outreach into the local community.

Boyton Mission is a single storey timber building, the original building being built in the 1920s. The building has electric heaters and the main worship area is able to hold 25 people. There is a timber extension housing a kitchen and an attached WC with an external access. There is a grassed area for car parking to the front of the building.

Viewings arranged by appointment



Jonathan Bennett

Property Manager

T: 07729 082502

E: jonathan.bennett@churchgrowth.org.uk

About Church Growth Trust

By renting from Church Growth Trust, you are partnering with experts in church property. Our mission is to bless churches which occupy our buildings by granting concessionary rents, helping you to keep the property in good condition, compliant with legislation and suitable for modern church use. We are passionate about offering our skills, experience and practical support in a way that serves the local church and see God's Kingdom grow. We recognise the church is the people and the building is there to provide a strong foundation from which to reach out to the community, support its mission and to help the church grow.

Church Growth Trust

The Barn, 1 Manor Farm Barns, Baines Lane,
Seaton, Oakham, LE15 9HP

T: 01536 201339

E: enquiries@churchgrowth.org.uk

www.churchgrowth.org.uk

Charity number: 1138119

Floorplan

Address:

Woodbridge, Suffolk IP12 3LP

Square footage:

- Main worship space - 333 sqft
- Kitchen - 43 sqft
- WC - 32 sqft
- Total floor space - approx. 408 sqft

